

# I N M A N G A L L E R Y

FOR IMMEDIATE RELEASE  
August 5, 2008

Inman Gallery is pleased to present the exhibition:

## **Gilad Efrat** *Common Space*

September 12 – October 25, 2008

**Rescheduled opening**  
**Wednesday, September 24**  
**6:00-8:00pm**

*Gallery hours: Tues. - Sat., 11-6  
and by appointment*



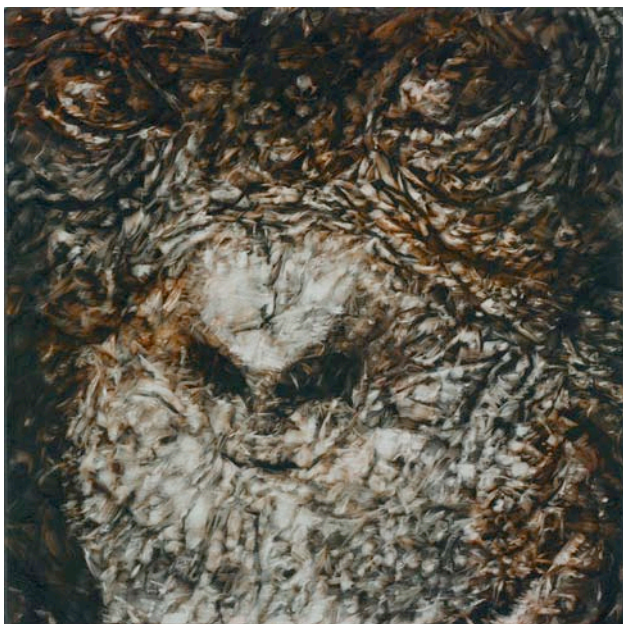
Stones and Sand III, 2008  
Oil on canvas, 58 x 43 inches

---

Inman Gallery is pleased to open the gallery's 19<sup>th</sup> season with an exhibition of new paintings by artist **Gilad Efrat** entitled "Common Space". Born and raised in Israel (1969, Beer-Sheva), Efrat received a BFA (1995) from the Bezalel Academy of Art and Design (Jerusalem) and an MFA from the Hebrew University and Bezalel Academy (2003). Now living in Brooklyn, NY, Efrat lived in Houston from 2004-2006 while participating in the Museum of Fine Arts, Houston's Core Artist in Residency Program. Starting in October 2008, he will be teaching at the Shenkar College of Engineering and Design, in Ramat-Gan, Israel. He will have a solo exhibition at Galleria Oredaria, Rome, Italy in December 2008.

Efrat's **Common Space** comprises paintings of landscapes and portraits of great apes distributed sparsely throughout the gallery's two exhibition venues. The landscapes are fragments, cropped, devoid of specificity of place. As one approaches, the image disintegrates into its component marks and falls into abstraction. Stepping back, the simple, familiar image of stones and sand in an arid desert landscape returns. The familiarity of these images is challenged when viewers learn that they are in fact extra-terrestrial landscapes (the moon and the planet Mars), places most will never visit. These are timeless, seasonless places; more still-life than landscape. They feel like "no place", or "every place"; and thus act as stand-ins for landscape in a larger sense of that word.

Efrat's apes are strong, yet gentle, their wrinkled faces echoing the landscapes' crags and fissures.



On the one hand alive today, inhabiting the same earth we do, the apes of Efrat's portraits also feel ancient. One has the sense of looking back through time when returning their gaze. We feel perhaps that we are looking at our own history. The same familiar/exotic dichotomy we experience with the moonscapes exists in these works. Apes are so closely related to humans, but fundamentally unreachable, foreign.

For Efrat, painting is an act of meditation; each work is constructed through a careful, laborious studio process. Initially, the canvasses are painted entirely with one or more background colors, then coated with a dark top layer. Working from a gridded

source photograph, using tools such as rags, Q-Tips, and other utensils, Efrat removes the dark layers square-by-square to "uncover" the image.

The common painting technique and similarly cropped views of the subjects invite specific comparisons between the two series. Each presents a conundrum to the viewer – negotiating the feeling of familiarity we project onto the work despite the realization that a deep, fundamental knowledge of either is beyond our reach.

#### **Inman Gallery upcoming exhibitions:**

**Tommy Fitzpatrick**, main gallery /  
**Nina Bovasso**, north gallery

Opening Saturday November 1<sup>st</sup>, 6 – 8pm.

#### **Gallery artists exhibitions outside the gallery:**

**Demetrius Oliver**, D'Amelio Terras, NY Opening Thursday September 4<sup>th</sup>, 6 – 8pm.

**Dario Robleto** Alloy of Love, 10 year survey exhibition  
Tang Teaching Museum, Saratoga Springs, NY

Opening Saturday September 27<sup>th</sup>, 6 – 8pm.

For more information, or press images, contact the gallery at [info@inmangallery.com](mailto:info@inmangallery.com) or 713.526.7800.